

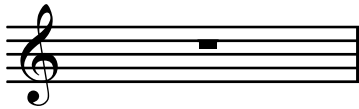
# Il giovane saxofonista

Metodo facile per saxofono

## Prima Parte Unità 1

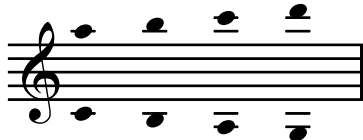
### Nozioni elementari di teoria

#### Pentagramma o rigo musicale



Il pentagramma è formato da 5 linee e 4 spazi dove si scrivono le note e le pause

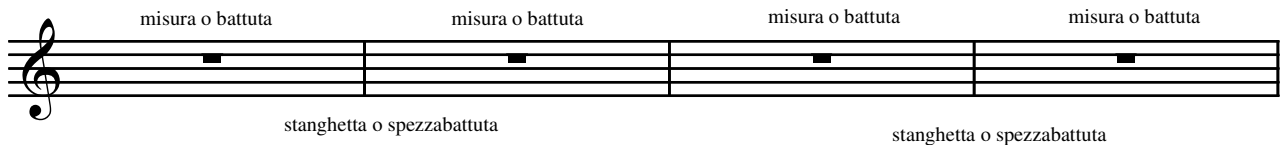
#### Tagli aggiuntivi



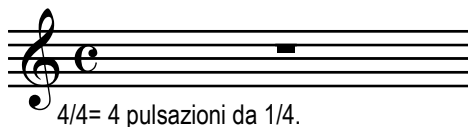
Non essendo il pentagramma sufficiente a contenere tutti i suoni, si adoperano dei tagli aggiuntivi che funzionano da righe.

#### Misura e stanghetta

La stanghetta o spezzabattuta divide il pentagramma in tante misure.

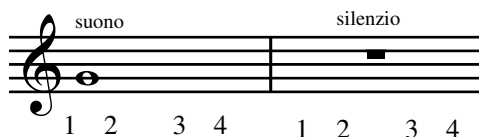


#### Chiave di violino e tempo



La chiave di violino o di sol indica la posizione delle note sul pentagramma (secondo rigo).  
Il tempo (C o 4/4) indica il numero di movimenti che deve contenere ciascuna misura.

#### Semibreve o intero



4 pulsazioni.

#### Corona o punto coronato



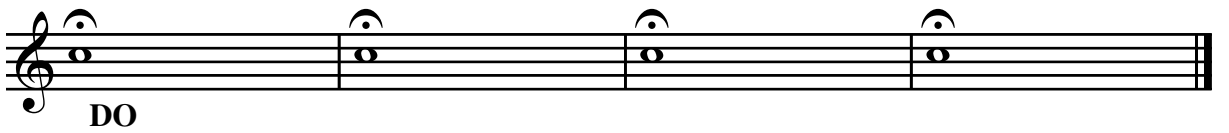
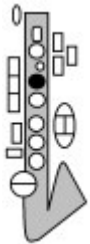
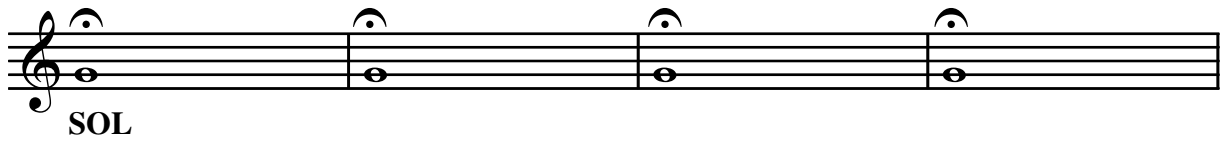
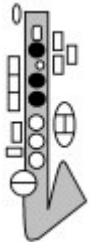
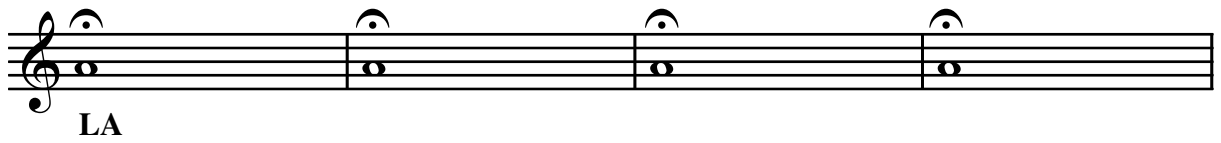
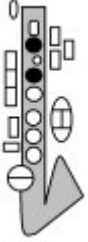
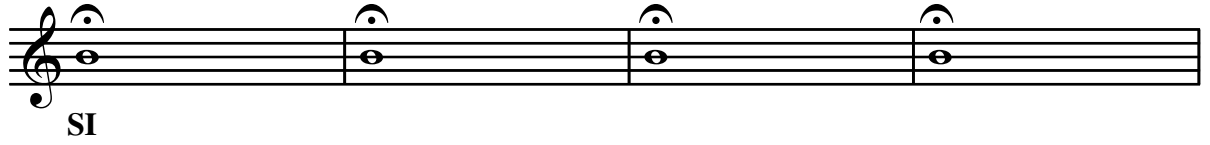
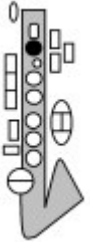
La corona o punto coronato fa prolungare il suono o la pausa a piacere dell'esecutore.

# Unità 2

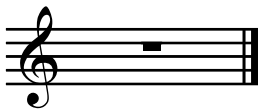
## Esercizi preparatori

Attaccare ogni nota con la lingua (attacco semplice).

Tenere le note più a lungo possibile.



### Doppia stanghetta



Indica la fine del brano

Teoria

### Ritornello



Indica di ripetere ancora una volta dall'inizio

☞ = Respiro

Attaccare ogni nota con la lingua (attacco semplice).  
 Respirare ogni due battute con la bocca, sollevando il labbro superiore ma senza togliere i denti da sopra il bocchino.

1 2 3 4    1 2 3 4    1 2 3 4    1 2 3 4

1 2 3 4    1 2 3 4    1 2 3 4    1 2 3 4

Doppia stanghetta

Minima o metà

suono    silenzio

1 2 3 4

2 pulsazioni.

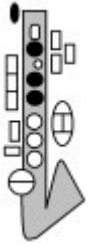
Teoria

1 2 3 4    1 2 3 4

# Unità 3

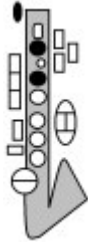
## Uso del portavoce o chiave d'ottava.

Aggiungere alle diteggiature già studiate la chiave d'ottava con il pollice della mano sinistra per ottenere i suoni all'ottava superiore. Suonare questi esercizi sempre sostenuto.



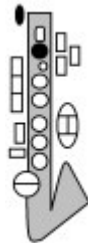
Musical exercise for the note SOL (G). The staff shows a treble clef with a G note on the second line. The exercise consists of four measures, each containing a single G note with a fermata. The notes are positioned on the staff to show the octave key being used to reach the higher register.

SOL



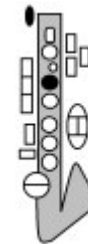
Musical exercise for the note LA (A). The staff shows a treble clef with an A note on the second space. The exercise consists of four measures, each containing a single A note with a fermata. The notes are positioned on the staff to show the octave key being used to reach the higher register.

LA



Musical exercise for the note SI (B). The staff shows a treble clef with a B note on the third line. The exercise consists of four measures, each containing a single B note with a fermata. The notes are positioned on the staff to show the octave key being used to reach the higher register.

SI



Musical exercise for the note DO (C). The staff shows a treble clef with a C note on the third space. The exercise consists of four measures, each containing a single C note with a fermata. The notes are positioned on the staff to show the octave key being used to reach the higher register.

DO

Respirare solamente dove è segnalato mantenendo la pressione dell'aria tra una nota e l'altra.

Musical exercise for breathing control. The staff shows a treble clef with a sequence of notes: G, A, B, C, G, A, B, C. The notes are connected by slurs, and there are commas above the notes G, A, and B, indicating where to breathe. Below the staff, the fingerings 1 2 3 4 are indicated for each note.

Musical exercise for breathing control. The staff shows a treble clef with a sequence of notes: G, A, B, C, G, A, B, C. The notes are connected by slurs, and there are commas above the notes G, A, and B, indicating where to breathe.

Musical exercise for breathing control. The staff shows a treble clef with a sequence of notes: G, A, B, C, G, A, B, C. The notes are connected by slurs, and there are commas above the notes G, A, and B, indicating where to breathe. Below the staff, the fingerings 1 2 3 4 are indicated for each note.

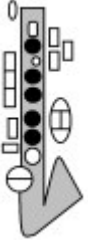
**Impariamo nuove note.**

Tenere le note più a lungo possibile.



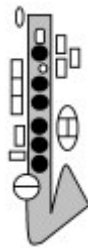
Musical notation for the note FA. The staff shows four measures, each containing a half note with a fermata. The notes are on the second line of the treble clef (F4) and the second space of the bass clef (F3).

FA



Musical notation for the note MI. The staff shows four measures, each containing a half note with a fermata. The notes are on the first space of the treble clef (E4) and the first space of the bass clef (E3).

MI



Musical notation for the note RE. The staff shows four measures, each containing a half note with a fermata. The notes are on the first line of the treble clef (D4) and the first line of the bass clef (D3).

RE

Premere il portavoce per le note all'ottava superiore.

Respirare solamente dove è segnalato mantenendo la pressione dell'aria tra una nota e l'altra.

Musical notation for the first exercise. The staff shows a sequence of notes: quarter, quarter, quarter, quarter, quarter, quarter, quarter, quarter. The notes are on the first line (D4), first space (E4), second line (F4), second space (G4), third line (A4), and third space (B4). There are fermatas after the 5th and 7th notes. Fingering numbers 1, 2, 3, 4 are written below the first four notes.

Musical notation for the second exercise. The staff shows a sequence of notes: quarter, quarter, quarter, quarter, quarter, quarter, quarter, quarter. The notes are on the first line (D4), first space (E4), second line (F4), second space (G4), third line (A4), and third space (B4). There are fermatas after the 3rd, 5th, and 7th notes. Fingering numbers 1, 2, 3, 4 are written below the last four notes.

**Riepilogo.**

Musical notation for the summary exercise. The staff shows a sequence of notes: quarter, quarter, quarter, quarter, quarter, quarter, quarter, quarter. The notes are on the first line (D4), first space (E4), second line (F4), second space (G4), third line (A4), and third space (B4). There are fermatas after the 5th and 7th notes. Fingering numbers 1, 2, 3, 4 are written below the first four notes, and 1, 2, 3, 4 are written below the last four notes.

Musical notation for the final exercise. The staff shows a sequence of notes: quarter, quarter, quarter, quarter, quarter, quarter, quarter, quarter. The notes are on the first line (D4), first space (E4), second line (F4), second space (G4), third line (A4), and third space (B4). There are fermatas after the 3rd, 5th, and 7th notes.